



# KITH & KIN INTERNATIONAL COLLEGE

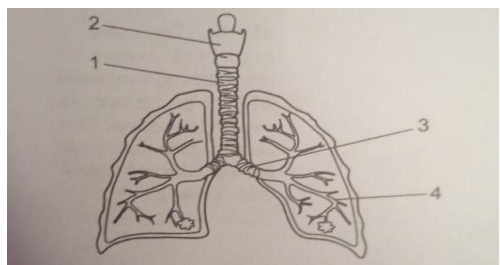
7/11 Kaoli Olusanya Street, Owode Ibeshe, Ikorodu, Lagos State.

## FIRST TERM EXAMINATION 2025/2026 ACADEMIC SESSION

NAME					
SUBJECT	BIOLOGY	CLASS	SS2	DURATION	2HOURS

Answer all questions: Each question is followed by four options lettered A to D. Find out the correct option for each question and shade in pencil on your answer space which bears the same letter as the option you have chosen. Give only one answer to each.

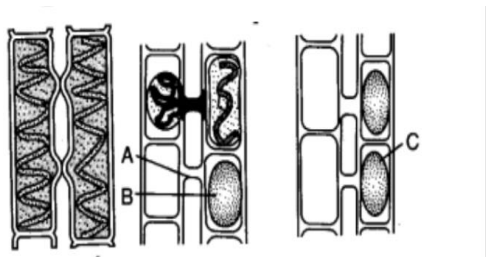
1. The diagram shows a part of the human gas exchange system



What are the labeled structures ?

	Larynx	Trachea	Bronchus	Bronchioles
A	1	2	3	4
B	2	1	3	4
C	1	2	4	3
D	2	1	4	3

2.

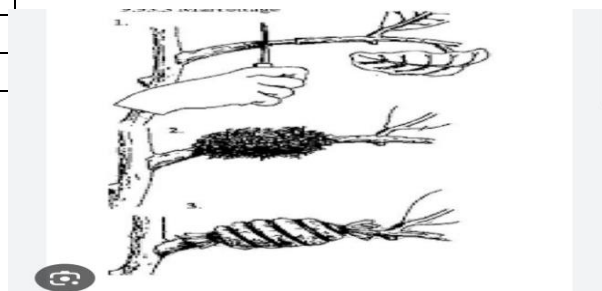


Which of the following process does not explain the process above

- A. Lateral protuberances start developing from the two adjacent cells
- B. The cytoplasm migrates into the female cell

- C. The male cell empty into the female cell to form a zygote
- D. None of the above

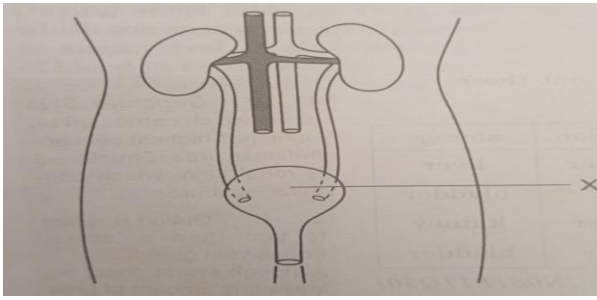
3. Which organism is formed from the fusion of male and female spirogyra gamete
- A. Zygospores
  - B. Gonads
  - C. Spermatozoa
  - D. Oogenesis



What type of asexual reproduction is demonstrated above?

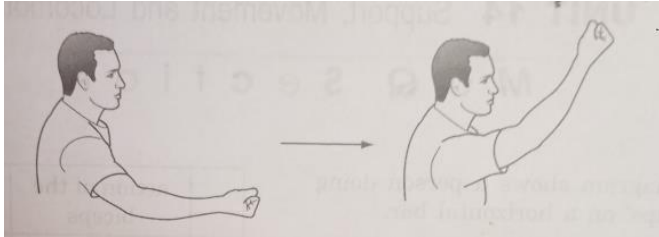
- A. Layering
- B. Cutting
- C. Grafting
- D. Marcotting

5. The diagram shows he human excretory system  
What is the function of X?



- A. To excrete urea
- B. To produce urea
- C. To produce urine
- D. To store urine

6.



The diagram shows an arm movement .  
Which joint is working to allow this movement

- A. A ball and socket joint at the elbow
  - B. A ball and socket joint at the shoulder
  - C. A hinge joint at the elbow
  - D. A hinge joint at the shoulder
7. Which organ is responsible for the excretion of carbon-dioxide ?
- A. Bladder
  - B. Liver
  - C. Kidney
  - D. Lung
8. Which substances are excreted in the urine of a healthy person ?
- A. Glucose & proteins
  - B. Glucose & water
  - C. Proteins & ions
  - D. Ions & water
9. The urinary system makes urine stores it and removes it from the body .Which organ is not part of the urinary system.

- A. Bladder
- B. Kidney
- C. Liver
- D. Ureter

10. Which is used to make urea ?

- A. Excess amino acids
- B. Excess fatty acids
- C. Excess glucose
- D. Excess hormones

11. As part of an investigation , samples of urine were collected from a person throughout a 24hours period .The urine sample collected early in the morning was more concentrated than the samples collected later in the day. Which is the most likely explanation for this ?

- A. Less urea was produced during the day
- B. Less water was reabsorbed from the urine in the renal tubules at night
- C. The blood glucose concentration decreases during the day
- D. The concentration of the blood plasma increased at night .

12. Which of the following are the final products of aerobic respiration

- A. Water , carbon-dioxide and energy
- B. Pyruvic acid , carbon-dioxide and water
- C. Glucose , energy and urea
- D. Energy and carbon-dioxide

13. Study the list below and use it to answer the questions below

The vertebral column of mammals consists of the following

- I. Lumbar vertebrae
- II. Thoracic vertebrae
- III. Caudal vertebrae
- IV. Cervical vertebrae
- V. Sacral vertebrae

Which of the following are found immediately next to the skull ?

- A. I
- B. II
- C. III
- D. IV

14. Which of the following articulates with the ribs ?

- A. I
- B. II
- C. III

D. IV

15. Which of the following articulates with the pelvic girdle ?

- A. V
- B. IV
- C. III
- D. II

16. In which of the following groups is nephridium found ?

- A. Crustaceans
- B. Reptiles
- C. Birds
- D. Mammals

17. Which of the following can be used for vegetative propagation ?

- A. Ginger stem
- B. Yam leaf
- C. Plantain roots
- D. Sweet potato

18. Which of the following organism respire through the body surface ?

- A. Man
- B. Fish
- C. Tridax
- D. Amoeba

19. In which part of kidney does ultra-filtration take place ?

- A. Bowman's capsule
- B. Distal convoluted tubule
- C. Proximal convoluted tubule
- D. Collecting ducts

20. In which of the following organisms is ammonia excreted as waste product ?

- A. Man
- B. Bird
- C. Amoeba
- D. Spirogyra

21. The following are the functions of supporting tissues in plant except

- A. Rigidity
- B. Flexibility
- C. Strengthening
- D. Secretory

22. The advantages of sexual reproduction include the following except

- A. It allows the formation of new species
- B. It allows production of desirable traits
- C. It permits variation of individuals
- D. It provides means for the variation of chromosomes number from generation to generation

23. Which of the following is an excretory product of Amoeba ?

- A. Urea
- B. Ammonia
- C. Uric acid
- D. Amino acid

24. Fish cannot survive on land because it has

- A. A body covered with scales
- B. A stream-lined body
- C. No lungs
- D. No walking appendages

25. The axial skeleton is made up of the following

- A. Skull, vertebral column, rib cage and sternum
- B. Limbs and limb girdles
- C. Lumbar and thoracic vertebrae
- D. Vertebral column and lumbar vertebrae

26. The xylem elements perform the function of transport but they also help to support plants because they

- A. Are internally located
- B. Are tubular
- C. Have rigid thick wall
- D. Constantly absorb water

27. The products of respiration are

- A. Nitrogen and water
- B. Nitrogen and carbon-dioxide
- C. Water and oxygen
- D. Carbon-dioxide and water

28. Green plants lose water to the atmosphere through the process of

- A. Respiration
- B. Photosynthesis
- C. Transpiration
- D. Translocation

29. In plants, respiration occurs in

- A. Mesophyll cells only

- B. The root only  
C. The stomata and lenticels only  
D. All living cells
30. Gaseous exchange occurs through the following structures in some organisms except  
A. Spiracle & trachea  
B. Alveoli and lungs  
C. Stomata and lenticels  
D. Chloroplast and plastids
31. Which of the following organs is not excretory in function ?  
A. Liver  
B. Kidney  
C. Pancreas  
D. Lungs
32. Which of the following substances is not an excretory product in mammals ?  
A. Carbon-dioxide  
B. Water  
C. Faeces  
D. Urea
33. Which of the following is not a component of appendicular skeleton ?  
A. Ulna  
B. Atlas  
C. Femur  
D. Pelvic girdle
34. Respiration is an essential life process providing the living cell with  
A. Oxygen  
B. Sugar  
C. Energy  
D. Carbon-dioxide
35. Filaments of spirogyra placed inside a beaker of tap water in a dark cupboard died because  
A. The filament could not photosynthesize  
B. Conjugation could not take place  
C. The temperature was too high  
D. The plant was over flooded
36. The longest bone in the body is the  
A. Humerus  
B. Femur  
C. Scapula  
D. Tibia
37. The axial skeleton is composed of  
A. Skull and vertebrae column  
B. Limbs and girdle  
C. Atlas and axis  
D. Radius and ulna
38. Anaerobic respiration results in the production of  
A. More energy than aerobic respiration  
B. No energy  
C. An equal amount of energy to aerobic respiration  
D. Less energy than aerobic respiration
40. Which of the following is not a skeletal tissue ?  
A. Plasma  
B. Chitin  
C. Cartilage  
D. Bone
41. Which of the following organ is used for gaseous exchange in a mature toad ?  
A. Gills ,lungs and eardrum  
B. Lungs , mouth ,and ear-drum  
C. Mouth ,skin and gills  
D. Skin , lungs and mouth
42. Which of the following structures is used for respiration in insects ?  
A. Lungs  
B. Thorax  
C. Cuticle  
D. Spiracles
43. Genetic variation occurs in  
A. Asexual reproduction  
B. Sexual reproduction  
C. Fragmentation  
D. Binary fission
44. In binary fission ,Amoeba  
A. The nucleus divides first  
B. The cytoplasm divides first  
C. Both are divided simultaneously  
D. None of these
45. Fragmentation is a mode of asexual reproduction found in

- A. Spirogyra
- B. Hydra
- C. Amoeba
- D. Paramecium

46. Number of thoracic vertebrae in mammals is

- A. 10
- B. 12
- C. 11
- D. 13

47. Which of the following is not the role of reproductive and Child Health Care (RCH) programs ?

- A. Awareness about reproductive health
- B. Providing facilities to build a reproductively health society
- C. Providing support to reproductive sick people
- D. Promote abortion

48. What modes have been used by the agencies to generate awareness on reproductive health ?

- A. Radio
- B. Newspaper
- C. Protests
- D. Television

49. Which of the following is the correct reason for delivering sex education at schools ?

- A. Discouraging myths and misconception
- B. Encouraging rise in population
- C. Solve the issue of global warming
- D. Promote myths

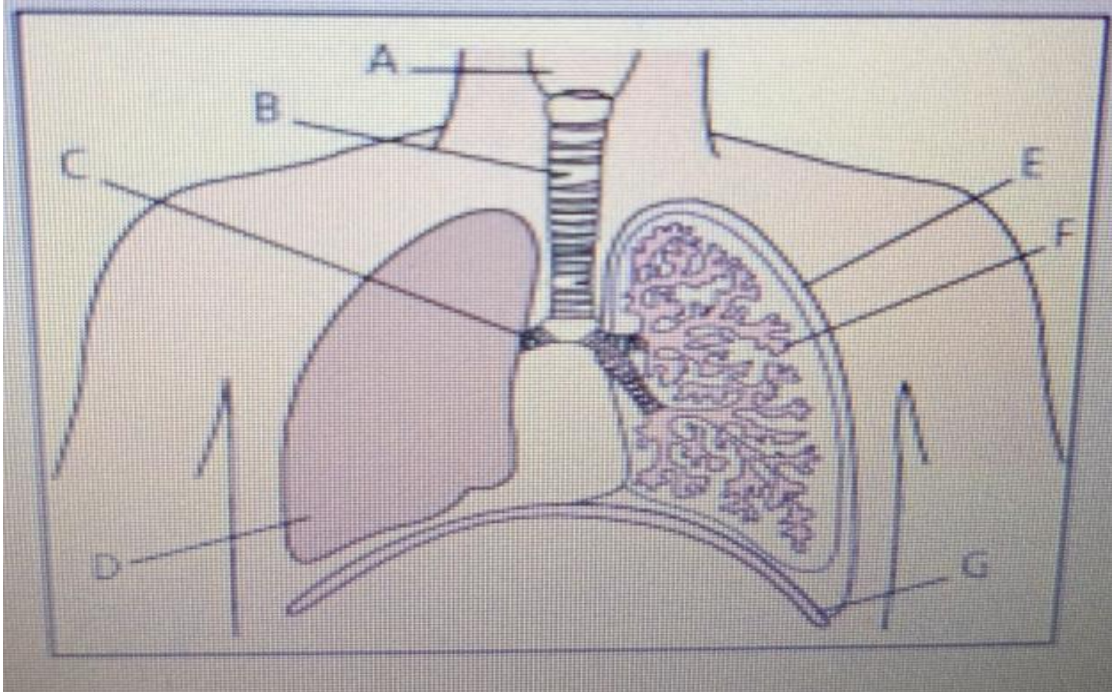
50. What is not a reproduction –related problem ?

- A. STDs
- B. Abortion
- C. Global warming
- D. Infertility

PAPER 2– ESSAY [40 marks]

Question number 1 is compulsory. .Answer any four questions from the section

1. The diagram shows the human breathing system



- (a) i. Name the structure A to G  
ii. Match parts A to G with these description  
a. Sheet of muscle forming the floor of the thorax  
b. One of these enters each lung  
c. Contains the vocal cords  
d. Flexible tube kept open by rings of cartilage  
e. Where exchange of gases takes place  
f. Slippery membrane that surrounds the lungs

(3marks)

- (c) Match each structure in the urinary system in the left column with the one of the function in the right column

Renal Artery	: Stores urine
Ureter	: Filter urea & other waste chemicals out of the blood
Kidney	: Carries blood with high concentration of urea
Bladder	: Carries urine down to the bladder

(4marks)

- (c) State and explain the function of each of the following structures found in plant

- Sclerenchyma
- Parenchyma

iii. Xylem

(3marks)

2. (a) i. What is joint ?

(1marks)

ii. List and explain four types of movable joint & mention one location in the mammalian body of each type.

(2marks)

iii. List four functions of the mammalian skeleton & name a particular skeleton which perform each of these functions

(2marks)

WAEC 2004/2005

(b) List and explain 5 types of natural vegetative propagation

(5marks)

3. (a) i. Briefly explain the term respiration

(2marks)

ii. Name two types of respiration & write a balanced equation to summarize each of them

(2marks)

(b) Outline the mechanisms involved in :

i. inhalation

(2marks)

ii. exhalation in human being

(2marks)

WAEC 2006

(c)i. Explain binary fission in Amoeba

ii. Explain conjugation in spirogyra

(2marks)

4. (a) List three functions of the kidney

(3marks)

(b) Make a labelled diagram of the mammalian kidney tubule

(c) Describe how the kidney carries out two of the function listed in “a” (3marks)

(c) State and explain four types of artificial vegetative propagation (4marks)

WAEC 1989

5. (a) i. Define Reproductive health

ii.State 4 harmful traditional practices in Nigeria (2marks)

b.. State 4 importance of reproductive health (2marks)

c . State 4 steps to improve the reproductive health (4marks)